

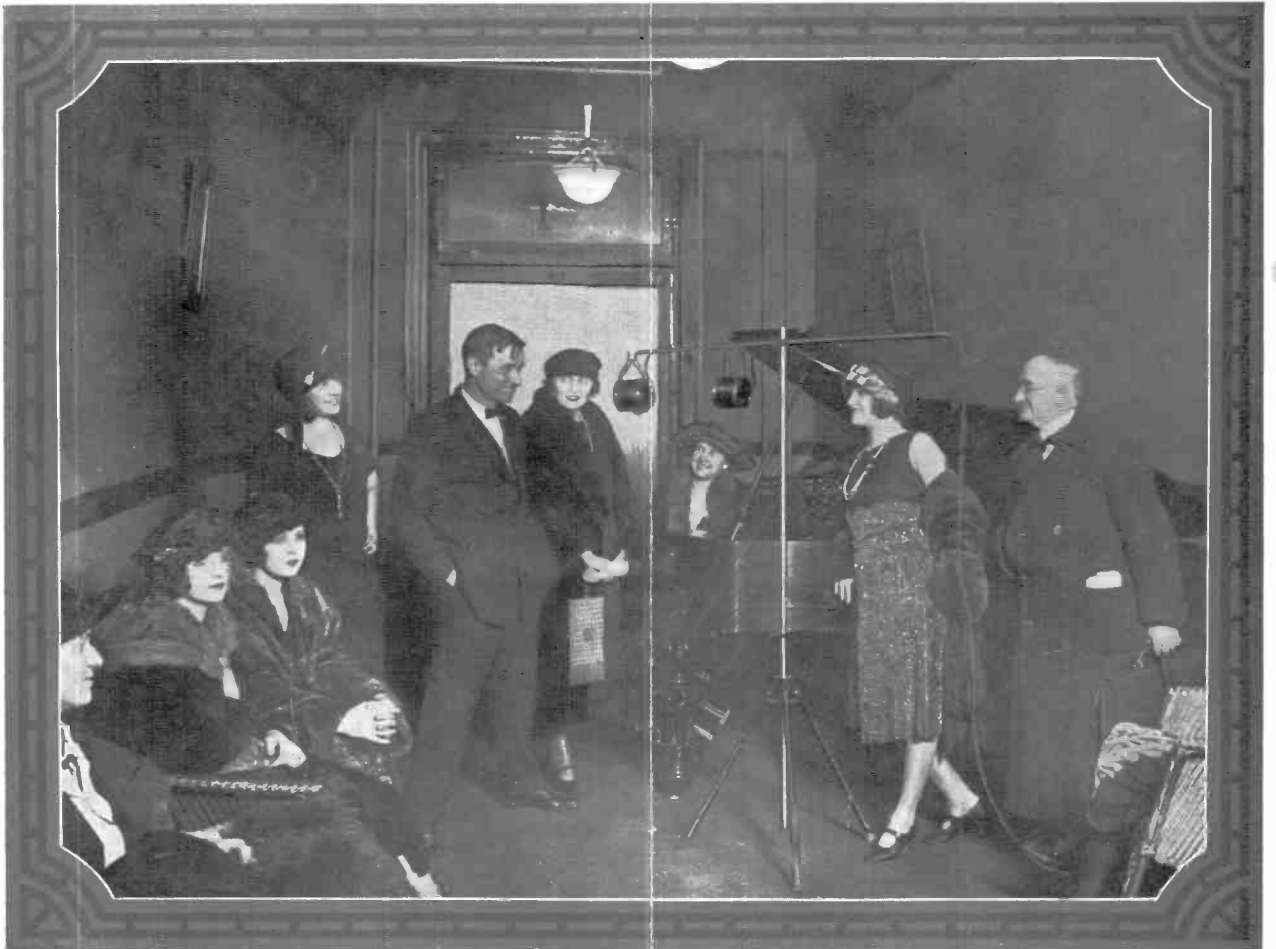
# RADIO BROADCASTING NEWS

The title is flanked by two radio towers with power lines stretching across the top. Below the towers are small illustrations of station buildings.

Sixty-sixth Week Broadcasting

March 26, 1922

KDKA Edition. Vol. I. No. 13



Will Rodgers, Nationally Known Comedian of Ziegfeld's Midnight Frolic, Speaking from the Pittsburgh Post Studio of Station KDKA



Published Weekly by the  
Westinghouse Electric & Manufacturing Co., East Pittsburgh, Pa.,  
to increase interest and enjoyment in Radio Broadcasting

J. C. McQUISTON, . . . . . Editor-in-Chief  
L. H. ROSENBERG, . . . . . Managing Editor  
HARVEY B. GAUL, . . . . . Musical Editor  
G. DARE FLECK, . . . . . Editor

Please address all communications to the Editor, Dept. of Publicity,  
Westinghouse Electric & Manufacturing Co., East Pittsburgh, Pa.

### THE RADIO HOME

The other day a letter was received from a prominent architect in New York, who is making the designs for a large apartment building in Pittsburgh. He desired information on the best methods of providing the necessary connections to make the radio telephone available for the occupants of each apartment.

A Philadelphia builder recently advertised in the newspapers of that city that the million dollars' worth of houses he is building "will be wired for radio telephone service".

In these two instances may be seen a reflection of the popularity of radio broadcasting everywhere.

We predict that before long radio equipment will be considered a necessary part of house furnishing. When the house hunter of tomorrow beards the landlord in his den one of his leading questions will be "Is it wired for wireless?" Perhaps he will insist on an extra radio connection, so that the cook and hired girl may entertain their company.

A Model Electrical Home in Pittsburgh will be opened for inspection by the public within the very near future. In addition to a complete equipment of labor-saving electrical appliances it will be furnished with everything necessary for the best reception of radio broadcasting. No doubt this home will be copied by many home builders who wish to incorporate modern conveniences in their homes.

Fortunately radio receiving sets are not limited in their application to localities where electric current is available. No matter how isolated a man's home, be it in the depths of the forest or on the smallest island at sea, radio broadcasting will link him up with the activities of the world.

### PROGRAM FOR THE WEEK

This program is prepared some time in advance of these dates, and is subject to change. Programs in detail are published daily in all Pittsburgh papers.

#### Sunday, March 26, 1922

- 11:00 A. M. Services of the Emory Methodist Episcopal Church North Highland Ave., at Rippey St., Pittsburgh, Pa. Rev. W. Wofford T. Duncan, Minister.
- 3:00 P. M. Radio Chapel at Station KDKA conducted by Rev. W. O. Yates, of the Swissvale Presbyterian Church, Swissvale, Pa.
- 7:30 P. M. Services of the Calvary Episcopal Church, Shady Ave., Pittsburgh, Pa. Rev. E. J. Van Etten, Rector.

#### Monday, March 27, 1922

- 12:30 P. M. Lenten Services from the Trinity Episcopal Church, Pittsburgh, conducted by Rev. Frank H. Nelson of Christ Church, Cincinnati, Ohio.
- 8:00 P. M. "Pittsburgh," by C. C. C. Stotler, Secretary and Treasurer, Title Guaranty Company, Pittsburgh, Pa. From Pittsburgh Post Studio.
- 8:30 P. M. Instrumental and vocal duets and solos by John Rodda, tenor; Hazel Drake, pianist; Mrs. Oliver S. Heck, contralto; Clyde DeRoy Kocher, violinist, and Mrs. William W. Andrew, accompanist.

#### Tuesday, March 28, 1922

- 12:30 P. M. Lenten Services from the Trinity Episcopal Church, Pittsburgh, conducted by Rev. Frank H. Nelson, of Christ Church, Cincinnati, Ohio.
- 8:00 P. M. "Modern Photography," by R. W. Johnson, Manager Trinity Court Studio, Pittsburgh, Pa. Talk on dress. From Pittsburgh Post Studio.
- 8:30 P. M. Entertainment by Mrs. Adele Eggers Furniss, soprano; T. F. Willman, violin; and Mrs. T. F. Willman, Piano.

#### Wednesday, March 29, 1922

- 12:30 P. M. Lenten Services from the Trinity Episcopal Church, Pittsburgh, conducted by Rev. Frank H. Nelson of Christ Church, Cincinnati, Ohio.
- 8:00 P. M. "Pittsburgh—Its Industrial Importance," by A. L. Humphrey, President of the Westinghouse Air Brake Company. From Pittsburgh Post Studio.
- 8:30 P. M. Message from the National Safety Council. Popular entertainment by Allan's Serenaders of the McKeesport Cyclers, McKeesport, Pa.

#### Thursday, March 30, 1922

- 12:30 P. M. Lenten Services from the Trinity Episcopal Church, Pittsburgh, conducted by Rev. Frank H. Nelson of Christ Church, Cincinnati, Ohio.
- 8:00 P. M. "Co-operation Between Banker and Farmer," by Dr. J. T. Holdsworth, Vice President, Bank of Pittsburgh, N. A. From Pittsburgh Post Studio.
- 8:30 P. M. Vocal and instrumental selections by W. F. McNally, baritone; Mrs. W. H. Long, pianist; also several violin selections and readings by artists, to be announced later.

#### Friday, March 31, 1922

- 12:30 P. M. Lenten Services from the Trinity Episcopal Church, Pittsburgh, conducted by Rev. H. W. Anthony, New Brighton, Pa.
- 8:00 P. M. "The Junior Civic Club and its Accomplishments," by Nellie S. Hoover, Peabody High School. From Pittsburgh Post Studio.
- 8:30 P. M. Artists from the studio of Richard Knotts. (Program Continued on Page 4)





### RADIO CHAPEL



Rev. W. O. Yates, Swissvale Presbyterian Church  
Swissvale, Pa.

### ENJOYS RADIO AT NINETY

Our illustration below shows Mrs. Sarah Frederick of Penn Ave., Turtle Creek, Pa., listening with interest to the Radio Chapel services from KDKA. Mrs. Frederick recently celebrated her 90th birthday. She is totally blind, which makes her radio set particularly valuable to her as it brings so many things into her life which otherwise she could not possibly experience. She eagerly awaits the time for radio services to start, and has frequently expressed her wonder and delight at this product of modern science.



### PROGRAM FOR THE WEEK

(Continued from Page 2)

#### Saturday, April 1, 1922

- 12:30 P. M. Lenten Services from the Trinity Episcopal Church, Pittsburgh, conducted by Rev. W. H. Anthony of New Brighton, Pa.
- 3:00 P. M. Popular concert by Mason's Orchestra.
- 7:30 P. M. Special Children's entertainment. Bird and animal imitations by Carlton C. Anthony, D.D.S.
- 8:00 P. M. Talk, by speaker to be announced later.
- 8:30 P. M. Geneva College Musical Clubs.

#### Sunday, April 2, 1922

- 10:45 P. M. Services of Calvary Episcopal Church, Shady Ave., Pittsburgh. Rev. E. J. Van Etten, Rector.
- 3:00 P. M. Radio Chapel at Station KDKA conducted by Rev. John Ray Evers, Pastor East End Christian Church, Pittsburgh, Pa.
- 7:30 P. M. Services of the Point Breeze Presbyterian Church, Fifth & Penn Aves., Pittsburgh, Pa. Dr. P. H. Barker, Minister.

### KDKA'S Week Day Schedule

- 10:00 to 10:15 A.M. Music. \*2:00 to 2:20 P.M. Music.
  - 12:30 to 1:00 P.M. Music. \*4:00 to 4:20 P.M. Music.
  - \*On Saturdays special concert from 3:00 to 4:00 P.M.
  - 7:30 P.M. Uncle Wiggily Bedtime Story from the Pittsburgh Sun.
  - 7:45 P.M. Special News, Government Market Reports, Summary of New York Stock Exchange, Weather Report.
  - 8:30 to 9:00 P.M. Musical Program
  - 9:00 to 9:05 P.M. News (United Press Service)
  - 9:05 to 9:30 P.M. Musical Program
  - 9:55 to 10:00 P.M. Arlington Time Signals
- Time Given is Eastern Standard Time.

### KDKA'S Sister Stations

- KYW—360 meters—Chicago, Ill. Central Time**
- 9:35 A.M. Opening Market Quotations, Chicago Board of Trade. Quotations every half hour until 1:00 P.M. Closing Market Quotations.
- 1:20 P.M. News and Market Reports.
- 2:15 P.M. News, Market, and Stock Reports.
- 4:15 P.M. News, Final Market, and Financial Reports.
- 6:30 P.M. Children's Bed Time Story.
- 7:30 P.M. Program of Music.
- 8:00 P.M. News and Sports.
- 9:00 P.M. Sunday, Radio Chapel.
- WJZ—360 meters—Newark, New Jersey. Eastern Time**
- Hourly concert on the hour from 11:00 A.M. to 8:00 P.M. Government weather forecast, daily 11:00 A.M., 12:00 M., 5:00 P.M. and 10:01 P.M.
- Shipping News—Weekdays except Sat. at 2:05 P.M. by Marine Engineering and Shipping Age.
- "Man in the Moon" stories with music for children (copyrighted by Newark Sunday Call) Tuesday and Friday—7:00 P.M.
- Arlington Time—Daily at 9:52 P.M.
- Music—Tuesday, Thursday, Saturday and Sunday, 8:15 P.M. until 10:00 P.M.
- Radio Chapel—Sunday at 3:00 P.M.
- WBZ—360 meters—Springfield, Mass. Eastern Time**
- 7:30 P.M. Uncle Wiggily Bedtime Story from the Springfield Union.
- 7:45 P.M. Prominent speaker, market and weather reports.
- 8:00 -9:00 P.M.—Program of music.
- 3:00 P.M. Sunday—Radio Chapel.
- 8:00 P.M. Sunday—Church Services.